



THE  
ULTIMATE  
CONVEYING  
SOLUTION

*Portable Conveyors*

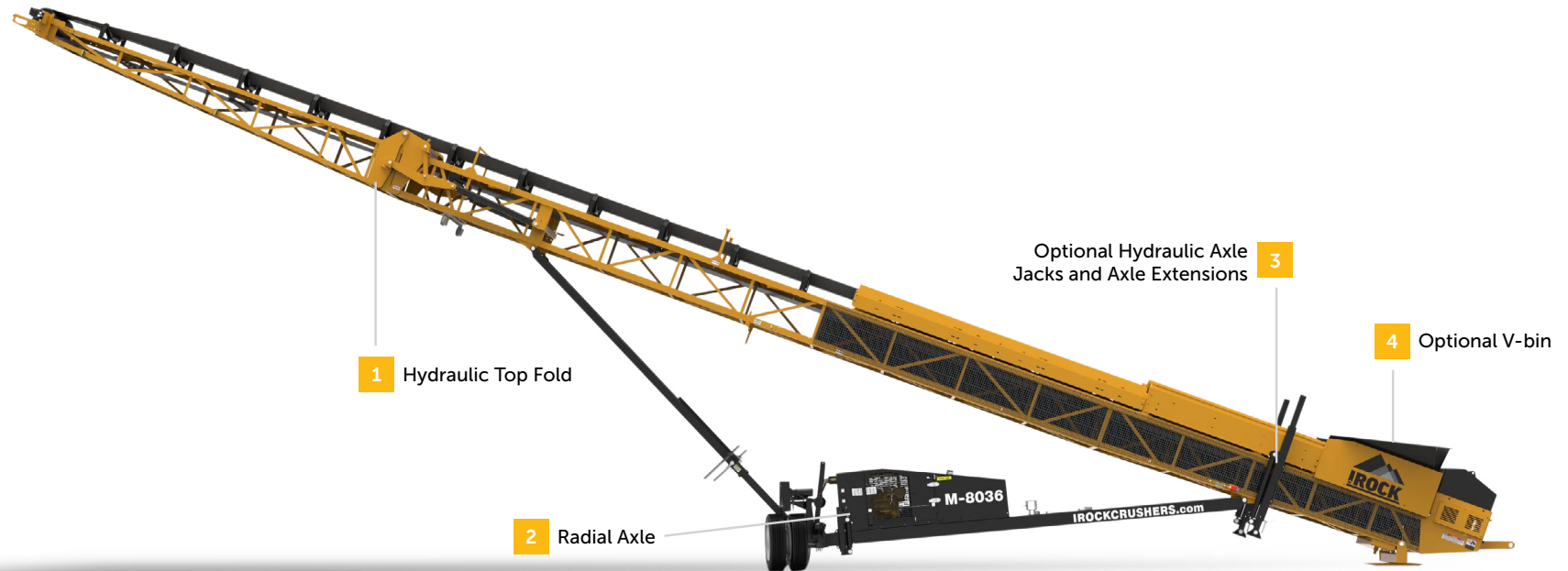
# M-Series

## Portable Conveyors



# M-Series Portable Conveyors

CONVEYOR



The IROCK M-Series Portable Conveyors have been designed for high capacity stockpiling operations. All units come standard with diesel power units, hydraulic main lift and hydraulic top fold. This heavy duty portable conveyor has a setback axle and 22.5 degree max conveyor angle allowing for the highest stockpiles per conveyor length in the industry. A durable truss frame and large feed hopper. Electric and dual power are both available as options. This hydraulically controlled drive unit attaches to the axle box and enables an on-site stacker positioning. Hydraulic folding provides easy transport with air brakes, mud flaps, and lights.

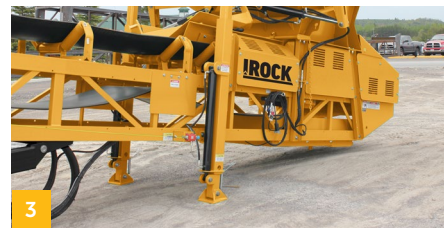
	<b>M-8036</b>	<b>MV-8036</b>	<b>M-10036</b>	<b>MV-10036</b>
Engine	CAT® C2.2 49 HP	CAT® C3.4L 74 HP	CAT® C3.4L 74 HP	CAT® C3.4L 74 HP
Transport Length	61' 10" (18.8 m)	61' 8" (18.8 m)	69' 6" (21.19 m)	69' 7" (21.2 m)
Transport Height	13' 6" (4.11 m)	13' 6" (4.11 m)	13' 6" (4.11 m)	13' 6" (4.11 m)
Transport Width	10' 2" (3.0 m)	10' 2" (3.10 m)	10' 11" (3.32 m)	10' 11" (3.32 m)
Stockpile Height	31' 1" (9.47 m)	31' 1" (9.47 m)	41' 3" (12.5 m)	41' 3" (12.5 m)
Belt	36" x 80' (900 mm x 24.4 m)	36" x 80' (900 mm x 24.4 m)	36" x 100' (900 mm x 30.9 m)	36" x 100' (900 mm x 30.9 m)
Production	500 US TPH	800 US TPH	500 US TPH	800 US TPH



1  
Straightforward hydraulic controls to fold and unfold, raise and lower the conveyor.



2  
Pivoting axle box allows for creating swept radius stockpiles.



3  
Hydraulic Axle Jacks enhance stability while the stacker is in operation. Hydraulic Axle Extensions attach to the rear undercarriage and enable axle extensions/contractions.



4  
Higher capacity over 7 yds<sup>3</sup> V-Bin hopper allows for larger amounts of material to be directly loaded into the hopper with a loader or excavator.