



THE
ULTIMATE
CONVEYING
SOLUTION

Mobile Conveyors

MT-Series

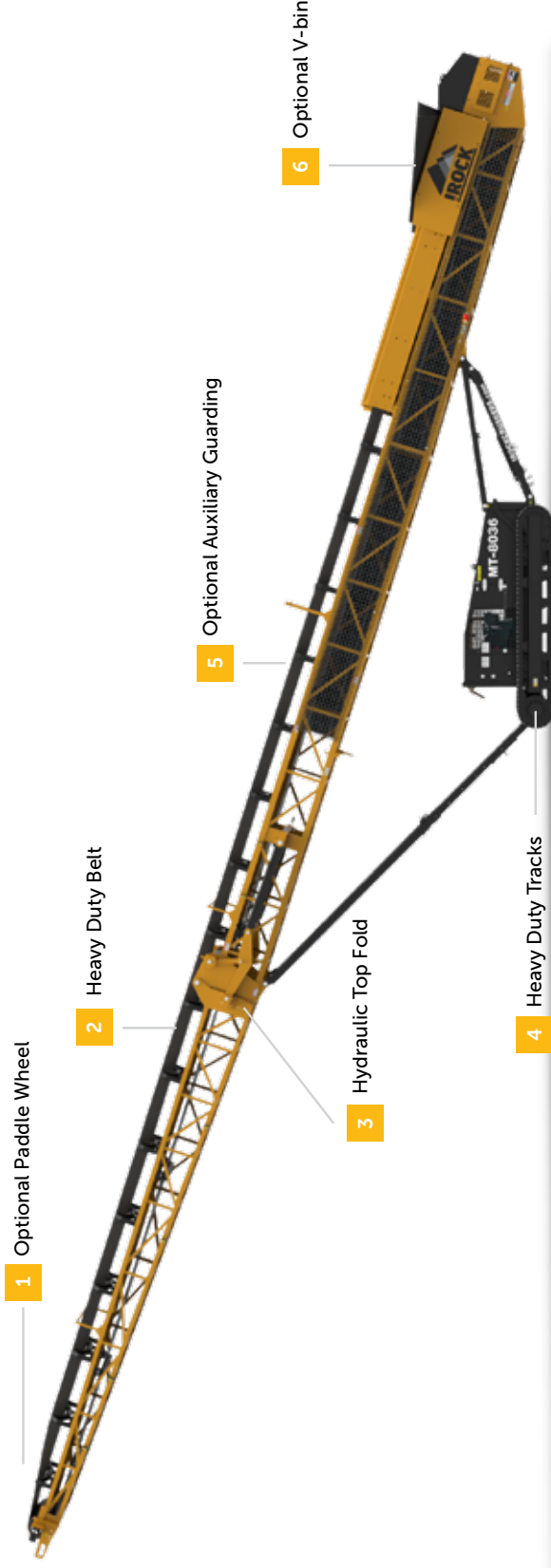
Mobile Conveyors



MT-Series

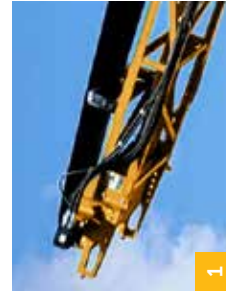
Mobile Conveyors

CONVEYOR



The IROCK MT-Series Mobile Conveyors are all about efficiency, from quick setup to maximum mobility, downtime is decreased while throughput and stockpile capacity are increased. Hydraulic main lift and top fold are standard, as is the diesel power unit. The 22.5 degree maximum conveyor angle allows for the highest stockpiles per conveyor length in the industry. Durable truss frame, large feed hopper and base production capacity of 500 TPH with optional upgrades to 800 TPH. Electric and dual power are also available.

	MT-8036	MTV-8036	MT-10036	MTV-10036
Engine	CAT® C2.2 49 HP	CAT® C2.8L 74 HP	CAT® C2.8L 74 HP	CAT® C2.8L 74 HP
Transport Length	51' 8" (15.748 m)	52' (15.9 m)	69' 8.5" (21.247 m)	70' 6" (21.4884 m)
Transport Height	11' 3" (3.429 m)	11' 10" (3.607 m)	11' 3" (3.429 m)	11' 10" (3.607 m)
Transport Width	8' 5" (2.6 m)	10' 5" (3.175 m)	8' 5" (2.6 m)	10' 5" (3.175 m)
Stockpile Height	31' 1" (9.47 m)	31' 1" (9.47 m)	40' 4" (12.294 m)	40' 4" (12.294 m)
Belt	36" x 80' (900 mm x 24.4 m)	36" x 80' (900 mm x 24.4 m)	36" x 100' (900 mm x 30.9 m)	36" x 100' (900 mm x 30.9 m)
Production	OPT: 800	800 USTPH	OPT: 800	800 US TPH



1

This Paddle Wheel attaches to the top end of the head frame of the stacker and helps to mix material as it discharges from the conveyor stabilizer legs.



2

Conveyor built with Heavy Duty 36" 3-ply belt.



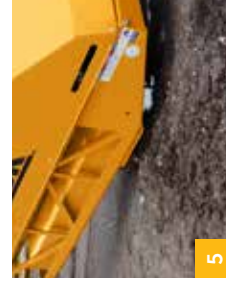
3

Straightforward hydraulic controls to fold and unfold, raise and lower the conveyor.



4

Provides remote maneuverability and enhances safety for moving freely to the best location.



5

This option attaches to the sides of the tail frame and improves safety by limiting exposure to moving parts.



6

Higher capacity over 7 yds³ V-Bin hopper allows for larger amounts of material to be directly loaded into the hopper with a loader or excavator and comes fitted with stabilizer legs.